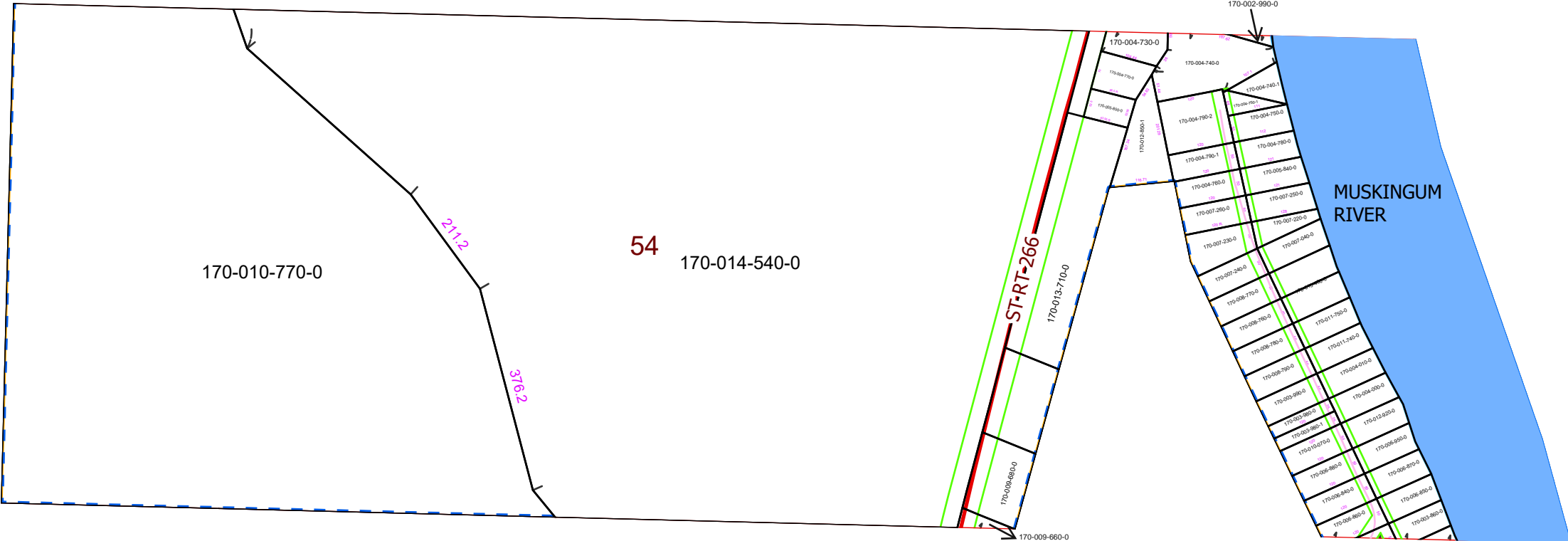


MORGAN COUNTY, OHIO

WINDSOR TWP. FRAC. 54, T-9, R-11, MUSKINGUM ALLOTMENT



PIN	Owner	LegalDescr	VOL	PAGE
170-004-790-2	ARIAS MELISSA, TERRY CHRIS	R11 T09 S00 FR 54	OR224	3359
170-004-000-0	BOARD OF COMMISSIONERS	R11 T09 S00 SD 19	OR205	2932
170-007-240-0	BOUREKAS JASON & MARYBETH	R11 T09 S00 FR 54	OR232	1278
170-006-860-0	CHAMBERS SHIRLEY A	R11 T09 S00 FR 51	D.V 141	757
170-004-740-0	CRAFT LEONARD E & JANICE M	R11 T09 S00 FR 54	OR224	3467
170-002-990-0	CRAFT LEONARD E & JANICE M	R11 T09 S00 FR 55	OR230	2062
170-013-400-0	CRAFT TERESA	R11 T09 S00 FR 54	OR218	1613
170-013-390-0	CRAFT TERESA	R11 T09 S00 FR 54	OR218	1613
170-010-770-0	CURTIS GEORGE ALAN & RUTH ELLEN	R11 T09 S00 FR 54	OR170	219
170-014-540-0	DAVIS BRADLEY K	R11 T09 S00 FR 54	D.V 194	363
170-012-920-0	DAWSON HELEN	R11 T09 S00 FR 54	OR97	367
170-006-880-0	DEBUS RONALD L	R11 T09 S00 FR 51	OR222	546
170-006-840-0	DEBUS RONALD L	R11 T09 S00 FR 54	OR222	546
170-004-770-0	DEMINT DANNY & EMMA	R11 T09 S00 FR 54	D.V 202	618
170-012-950-0	DILLER MARVIN DARRYL	R11 T09 S00 FR 51	D.V 206	90
170-003-860-0	DILLER MARVIN DARYLE & MELISSA DELORES	R11 T09 S00 FR 54	D.V 125	433
170-012-913-0	FRIENDS OF LOWER MUSKINGUM RIVER	BROKAW FARM SD	OR165	50
170-004-780-0	HALEY JAMES A	R11 T09 S00 FR 54	D.V 185	547
170-005-840-0	HALEY JAMES A & MARILYN WATTEYNE	R11 T09 S00 FR 54	D.V 178	303
170-005-960-0	HAMMOND HUBERT	R11 T09 S00 FR 51	D.V 136	181
170-008-770-0	HELMS STEVE & TERESA J CRAFT	R11 T09 S00 FR 54	OR137	240
170-008-760-0	HELMS STEVE & TERESA J CRAFT	R11 T09 S00 FR 54	OR137	240
170-007-260-0	HOOVER JOHN M SR	R11 T09 S00 FR 54	OR220	1408
170-007-250-0	HOOVER JOHN M SR	R11 T09 S00 FR 54	OR220	1408
170-007-230-0	HOOVER JOHN M SR	R11 T09 S00 FR 54	OR203	1335
170-004-790-1	HOOVER JOHN M SR	R11 T09 S00 SD 47	OR220	1408
170-004-760-0	HOOVER JOHN M SR	R11 T09 S00 FR 54	OR220	1408
170-012-850-1	HOOVER JOHN SR	R11 T09 S00 FR 54	OR226	406
170-007-220-0	HOOVER RONALD L & JANET L	R11 T09 S00 FR 54	OR125	397
170-007-040-0	KLAUS MARY BETH	R11 T09 S00 FR 54	OR72	487
170-011-750-0	MCKENZIE JACKIE	R11 T09 S00 FR 54	OR205	3269
170-011-740-0	MCKENZIE JACKIE	R11 T09 S00 FR 54	OR205	3269
170-008-790-0	MCKENZIE JACKIE	R11 T09 S00 FR 54	OR205	3411
170-008-780-0	MCKENZIE JACKIE	R11 T09 S00 FR 54	OR205	3411
170-004-010-0	MCKENZIE JACKIE	R11 T09 S00 FR 54	OR92	225
170-003-990-0	MCKENZIE JACKIE	R11 T09 S00 FR 54	OR92	225
170-003-980-0	MCKENZIE JACKIE	R11 T09 S00 FR 54	OR92	225
170-009-680-0	MILLER JUDITH A	R11 T09 S00 FR 54	OR152	514
170-009-660-0	MILLER JUDITH A	R11 T09 S00 FR 51	OR152	514
170-010-070-0	MORRIS MARGARET F & SANDRA GAIL KEATON	R11 T09 S00 FR 54	OR218	374
170-003-980-1	MORRIS MARGARET F & SANDRA GAIL KEATON	R11 T09 S00 FR 54	OR218	374
170-004-730-0	ROBISON TITUS	R11 T09 S00 FR 54	OR223	2968
170-003-750-0	SALISBURY DORTHEA E ET2AL	R11 T09 S00 FR 51	OR55	500
170-006-870-0	SCHIRTZINGER TERESA M	R11 T09 S00 FR 54	OR35	129
170-006-850-0	SCHIRTZINGER TERESA M	R11 T09 S00 FR 54	OR35	129
170-006-950-0	SEARLES DENISE LEE	R11 T09 S00 FR 54	OR232	2303
170-013-710-0	TOMPKINS RANDY C II	R11 T09 S00 FR 54	OR235	1022
170-004-750-1	VARGO MICHAEL	R11 T09 S00 SD 45	OR234	212
170-004-750-0	VARGO MICHAEL	R11 T09 S00 FR 54 M	OR234	212
170-004-740-1	VARGO MICHAEL	R11 T09 S00 SD 46	OR234	212
170-005-850-0	WATTEYNE MARILYN & ERIC M CHRISTOPHER	R11 T09 S00 FR 54	OR110	339

Boundaries

Type

- County
- Hidden
- Hydro
- Parcel
- ROW
- Section
- Lot

..... <all other values>



08/10/2020

